

"On Pause"

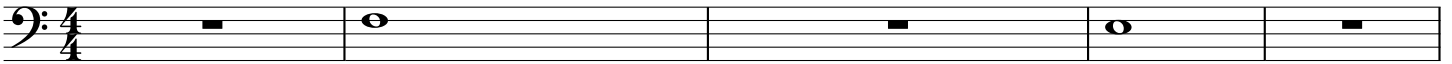
Hilary Jeffery

1

<-----> ----->

Einatmen Lange Ton ---> ganz Atem! "Breathe On Pause!"

<-----> ----->

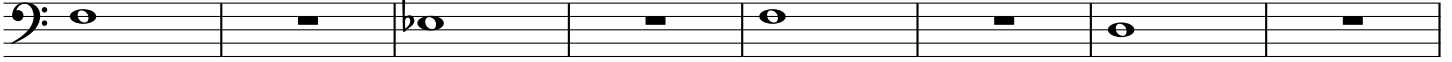


mit Fuß Schlagen:

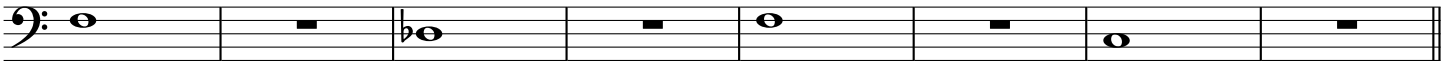
1 2 3 4

mf

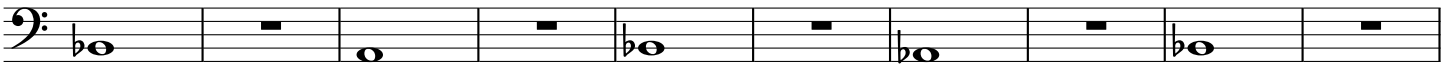
6



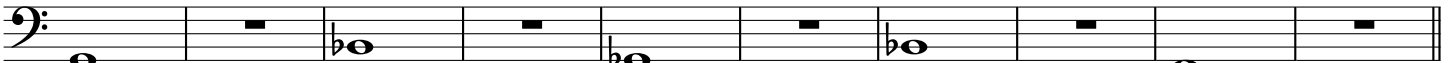
14



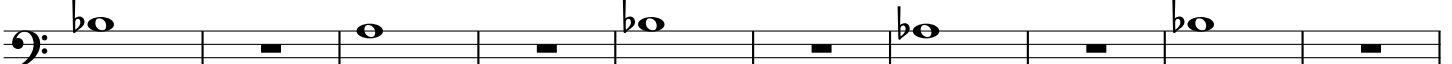
22



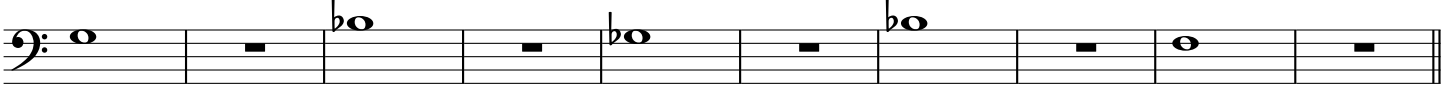
32



42



52



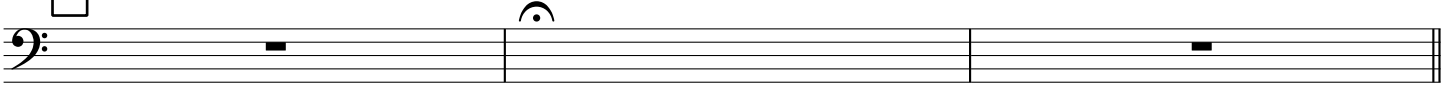
62

2

PAUSE

"ON" Lange Ton ---> ganz Atem!

PAUSE



pp

3

Einsatz: "P"

kein Zunge --->

<----->

Einatmen ----->

1 2 3 4



mf

74

